



Mabou Mines is a collaborative hub for diverse, intergenerational, avant-garde theater artists. Mabou Mines' creative vision is informed by the ethos of our co-founders: JoAnne Akalaitis, Lee Breuer, Philip Glass, Ruth Maleczek, and David Warrilow. Fifty-four years later, the company remains committed to collaboration and providing a platform for work that interrogates, innovates, and represents a multiplicity of identities and experiences.

Artistic Directors

Mallory Catlett, Sharon Ann Fogarty,
Karen Kandel, Carl Hancock Rux

Associate Artists

Tei Blow, Perel, David Thompson,
Carrie Mae Weems, Tamar-kali, Melanie Dyer

Senior Artistic Associates

JoAnne Akalaitis, Clove Galilee, Philip Glass,
Greg Mehrten, Maude Mitchell, David Neumann, Bill
Raymond, Terry O'Reilly, Dianne Smith, Basil Twist

Board of Directors

Mallory Catlett, Leonore Cooney, Nicole Kassell,
Jason Jaffrey, Esther Fortunoff, Karen Kandel, David
Preminger, Carl Hancock Rux, Fredrick Sherman

Board of Advisors

Jill Godmilow, Dr. Harold Kooden,
Gail Merrifield Papp, Nigel Redden

Interim Managing Director

Mallory Catlett

Production Manager

Zilvinas Jonusas

Producer

Autumn Angeletti

Company Manager

Brandi Holt

Development Consultant

Joe Stackell

Fall 2024 Interns

Katrina Carlyle
Omar Campbell
Nadya Zahra Amir

Special Thanks

Catherine Coray
Esther Fortunoff
Nicole Kassell
Alicia Hall-Moran
David Thomson
Esther Fortunoff

Karen Kandel
Susan Catlett
Elise Thoron
Soho Rep
Wooster Group
St. Ann's Warehouse

Chocolate Factory
Park Avenue Armory
Harlem Stage
Metropolitan Opera
National Sawdust
Carl Hancock Rux

Dianne Smith
David Henry Hwang
Edisa Weeks
Melanie Joseph
The Drama League
Andy Sowers and PSNY

SUPPORT FOR MABOU MINES is provided by the National Endowment for the Arts, The New York State Council on the Arts, the New York City Department of Cultural Affairs in Partnership with the City Council and Materials for the Arts, The NYC Women's Fund by the City of New York Mayor's Office of Media and Entertainment/The New York Foundation for the Arts, the Axe-Houghton Foundation, the Lawton W. Fitt and James I. McLaren Foundation, Distracted Globe Foundation, the MacMillan Family Foundation, piece by piece productions, the Fan Fox & Leslie R. Samuels Foundation, the Emma Scheafer Foundation, the Howard Gilman Foundation, the JKW Foundation, the Stavros Niarchos Foundation, the David and Leni Moore Family Foundation, New Music USA, the Shubert Foundation, the W Trust, and Emma A. Shafer Charitable Trust.

WELCOME TO OUR HOME AT THE 122 CC

Since 1978 Mabou Mines has been a resident at the 122 Community Center (122 CC), a city-owned former public school in NYC's East Village PS 122. In 2013 the City of New York, the Department of Cultural Affairs and the Department of Design and Construction led an extensive renovation of the 122 Community Center. Today the 122 CC resident companies include: Mabou Mines, The Alliance for Positive Change, Performance Space New York, Painting Space 122 and Movement Research

NEXT UP

**RICH WITH HISTORY
UNDER THE RADAR FESTIVAL
MABOU MINES
JANUARY 8 - 16, 2025**



**Council on
the Arts**

ISN / SNF

ΙΑΡΥΜΑ ΣΤΑΥΡΟΣ ΝΙΑΡΧΟΣ
STAVROS NIARCHOS FOUNDATION

MABOU MINES

CO-ARTISTIC DIRECTOR
MALLORY CATLETT

CO-ARTISTIC DIRECTOR
KAREN KANDEL

CO-ARTISTIC DIRECTOR
CARL HANCOCK RUX

PRESENTS

SUITE/space 2024

THE REMIX



About SUITE/space

Mabou Mines' performance initiative SUITE/space, provides artistic advisement, rehearsal & performance space, financial & administrative support in our state-of-the-art, 84-seat theater to artists that share Mabou Mines' commitment to breaking new ground in form and content. Mabou Mines provides:

- A \$4,000 stipend and a 50-50 box office split.
- 40 hours of rehearsal space in Mabou Mines' sunlit studio in the East Village.
- Technical and administrative support.
- Studio visits with the program's Artistic Directors and guest advisors.
- 12 hours of technical rehearsal in the theater.
- Four SUITE/space in-progress performances in a festival-like setting at Mabou Mines.

Applications for SUITE/space 2025 open in Spring 2025.

SUITE/space 2024: The Remix

This year our residency program for artists of color celebrates its 7th anniversary and the 20 artists who have helped to create this sanctuary for radical imagination, collaboration and care. In the spirit of reflection and celebration, The SUITE/space Remix—a unique adaptation of the SUITE/space festival of performances—welcomes returning SUITE/space artists to present new and evolving offerings in a weeklong event that includes *Sunder* by Mary Prescott (December 11-13) & The Remix Performance Party (December 16).

The Remix Party Company

DJ
DJ YARDGYAL
FEATURED PERFORMER
JERMAINE ROWE
FEATURED PERFORMER
MARCELLE DAVIES-LASHLEY

EMCEE
LIZA JESSIE PETERSON
FEATURED PERFORMER
TARIQ AL-SABIR
FEATURED PERFORMER
KAREN KANDEL

INSTALLATION ARTIST
MARIA TAKEUCHI
FEATURED PERFORMER
YOKO MURAKAMI
FEATURED PERFORMER
CARL HANCOCK RUX

PRODUCTION MANAGER
ŽILVINAS JONUŠAS
ASSISTANT STAGE MANAGER
DAYAUN WAITERS
AUDIO TECHNICIAN
ANDREW FOX
PRODUCTION ASSISTANT
MACKENZIE BLACK

ARTISTIC PRODUCER
AUTUMN ANGELETTIE
LIGHTING DESIGNER
ROBIN A. EDIGER-SETO
VIDEO TECHNICIAN
MAX VAN
PRODUCTION ASSISTANT
ADVAIT RATHI

PRODUCTION STAGE MANAGER
DAMAYANTI WALLACE
EVENT TEAM
**KIA AYERS-GOSS, ESME
MARIA NG, ZAMOI MURRELL,
JONATHAN SCHATZBERG**
DOCUMENTARIAN
JOHNNY JOHNSON

Music Director and Pianist for Jermaine Rowe Jerome Morris
Movement Director for Jermaine Rowe Jamie Thompson
Video Designer and Accompanist to Yoko Murakami Drew Wesely
Collaborator to Maria Takeuchi Alec Fellman
Pianist for Marcelle Davies-Lashley Sam Guillaume

Crew Support by Joe Pegorch, Michael DeCaul, Mourra Noah, Rodney Perez, Ansel Combs, Peter McCloskey, and Emily LaRochelle.

The SUITE/space Artists



Tariq Al-Sabir



Shenny De Los Angeles



Cinthia Chen



Marcelle Davies-Lashley



Nava Derakhshani



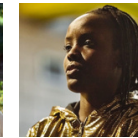
Sean Devare



Davalois Fearon



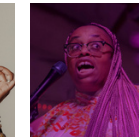
Sanaz Ghajar



Shantelle C. Jackson



Tamar-kali



Naima Lowe



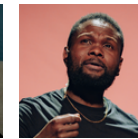
Yoko Murakami



Cristina Pitter



Mary Prescott



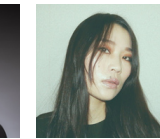
Jermaine Rowe



Christopher-Rashee Stevenson



Glenn Potter-Takata



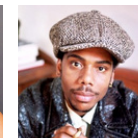
Maria Takeuchi



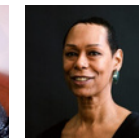
Edisa Weeks



Sim Yan Ying "YY"



Carl Hancock Rux
Program Mentor



Karen Kandel
Program Mentor



Autumn Angelettie
Program Producer

Give Love to Mabou Mines

Like the Space?
Scan Here to Rent It!



Want to Support Us?
Scan Here to Donate!



Want More Mabou?
Scan Here to Shop!



This program is supported, in part, by public funds from the New York City Department of Cultural Affairs in Partnership with the City Council and by The New York State Council On the Arts, and the Stavros Niarchos Foundation.